

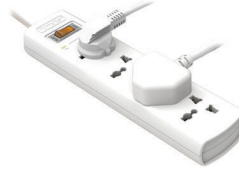
SZM304-4

- Surge protection (L-N), 210 Joules
- Maximum spike current: 6,500 AMPS
- Overload protection
- Master Switch
- 3 Sockets
- MAX2500W-MAX10A, 250V
- 1.5 Meter



SZM404-4

- Surge protection (L-N), 210 Joules
- Maximum spike current: 6,500 AMPS
- Overload protection
- Master Switch
- 4 Sockets
- MAX2500W-MAX10A, 250V
- 1.5 Meter



SZC502-4

- 5 AC
- Child-protective shutter
- Overload protection
- Surge protection
- Independent switches
- MAX 2500W-10A, 250V~50/60HZ
- 2 Meter



SZM604-4

- Six universal standard outlets
- Surge protection
- Double break safety switch
- Flame retardant material
- Integral copper bar
- MAX2500W-MAX10A, 250V



PZC504-4

- Five universal standard outlets
- Independent switches
- Surge protection
- Overload protection
- Flame retardant material
- MAX2500W-MAX10A, 250V



SZN607

- Two powered USB ports (2,4 AMP Combined)
- Five universal standard outlets
- Child-protective shutters
- Double break safety switch
- Flame retardant material
- Integral copper bar
- MAX2500W-MAX10A, 250V



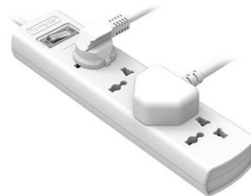
SZM804-4

- Eight universal standard outlets
- Surge protection
- Double break safety switch
- Flame retardant material
- Integral copper bar
- MAX2500W-MAX10A, 250V



SZM401

- Four universal standard outlets
- Flame retardant material
- Integral copper bar
- MAX2500W-MAX10A, 250V



30W USB-C Wall Mount

- Input: 100-240Vac, 1.0A, 50/60Hz
- Output: 5V3A/9V3A/15V2A
- Protocol: PD2.0
- Efficiency Level: VI
- Dimensions: 61*44*28mm
- DC Cable: 1m
- Warranty: 2 Years
- CB, FCC, UL, VI Certified



K65W Fast Charger

- Type: PD Charger
- Power: 65W
- Input: 100-240~50/60Hz 1.8A
- Output: 5V/3A or 9V/3A or 12V/3A or 15V/3A or 20V/3.25A
- Dimensions: 55.0*55.0*28.5mm
- Weight: 190.6g
- CE, CB Certified



SZF207 Charge Pub Smart A35

- Electrical Rating: MAX2500W-10A 250V 50/60Hz
- Overvoltage Protection
- Overcurrent Protection
- 1 USB-A and 2 USB-C Output: MAX35W



POWER STRIPS SURGE PROTECTION POWER STRIP CHARGER

90W Mini II
Netbook Adapter



65W ES III
Netbook Adapter



40W
Netbook Adapter



FROZEN 400
CPU Cooler

- 4 Copper heat pipes, low noise
- RGB dazzle color lighting effect
- intel/AMD platform support



FROZEN 200
CPU Cooler

- 9225mm fan design
- 2 Copper heat pipes
- Intel/AMD platform support



GX122
Fan

- Transparent fan blade
- High air flow, low noise
- Big 4 PIN interface design, convenient to use
- Cushioning rubber pad
- Dazzle/white/blue light is optional



MVP K1000X
Fully Modular



Rated Power : 1000W
 Input : 100-264Vac
 Fan : 12cm
 +12V Output : 70.8A
 (Single-Rail)
 PFC : Active
 Circuit Design : LLC+DC-DC
 Certificates : CCC, ROHS
 Equiped with I/O Switch

MVP K850
Fully Modular



Rated Power : 850W
 Input : 90-264Vac
 Fan : 12cm
 +12V Output : 70.8A
 (Single-Rail)
 PFC : Active
 Circuit Design : LLC+DC-DC
 Certificates : CCC, ROHS
 Equiped with I/O Switch

MVP K750
Fully Modular



Rated Power : 750W
 Input : 90-264Vac
 Fan : 12cm
 +12V Output : 50A
 (Single-Rail)
 PFC : Active
 Circuit Design : LLC+DC-DC
 Certificates : CCC, ROHS
 Equiped with I/O Switch

MVP K650
Fully Modular



Rated Power : 650W
 Input : 90-264Vac
 Fan : 12cm
 +12V Output : 70.8A
 (Single-Rail)
 PFC : Active
 Circuit Design : LLC+DC-DC
 Certificates : CCC, ROHS
 Equiped with I/O Switch

WD650K
Non-Modular



Rated Power : 650W
 Input : 80-2280Vac
 Fan : 12cm
 Silent Hydraulic
 +12V Output : 54A
 (Single-Rail)
 PFC : Active
 Circuit Design : LLC+DC-DC
 Certificates : CCC, ROHS
 Equiped with I/O Switch

WD500K
Non-Modular



Rated Power : 550W
 Input : 180-264Vac
 Fan : 12cm
 +12V Output : 54A
 (Single-Rail)
 PFC : Active
 Circuit Design : LLC+DC-DC
 Certificates : CCC, ROHS
 Equiped with I/O Switch

GX750
Non-Modular



Rated Power : Max:750W;
 Peak:
 Input : 180-264Vac
 Fan : 12cm
 Hydraulic
 +12V Output : 62.5A
 (Single-Rail)
 PFC : Active
 Circuit Design : LLC+DC-DC
 Equiped with I/O Switch

GX650
Non-Modular



Rated Power : Max:650W;
 Peak:
 Input : 180-264Vac
 Fan : 12cm
 Hydraulic
 +12V Output : 50A
 (Single-Rail)
 PFC : Active
 Circuit Design : LLC+DC-DC
 Equiped with I/O Switch

CP6000 Silent
Non-Modular



Rated Power : Max:500W;
 Peak:600W
 Input : 180-264Vac
 Fan : 12cm Silent
 +12V Output : 40A
 (Single-Rail)
 PFC : Active
 Circuit Design : Two Transistor
 Forward Equiped with I/O Switch

CP5000 Silent
Non-Modular



Rated Power : Max:400W;
 Peak:500W
 Input : 180-264Vac
 Fan : 12cm Silent
 +12V Output : 40A
 (Single-Rail)
 PFC : Active
 Circuit Design : Two Transistor
 Forward Equiped with I/O Switch

Philippine Distributor:



Authorized Reseller: